



EXCELLON

FOR IMMEDIATE RELEASE: April 25, 2013

Toronto Stock Exchange – EXN
No. 10 – 2013

EXCELLON EXTENDS GOLD ZONE TO DEPTH ON BESCHEFER PROJECT

Toronto, Ontario – April 25, 2013 – Excellon Resources Inc. (TSX:EXN) ("Excellon" or "the Company"), Mexico's highest grade silver producer, is pleased to report the remainder of the results from the recently completed fall and winter diamond drilling programs on the company's Beschefer and DeSantis properties, both located in the prolific Abitibi Greenstone Belt of Northeastern Ontario and Northwestern Quebec. The programs followed up on known mineralization as well as investigating previously untested geophysical anomalies and regional geological targets. Significant intersections released today include:

Beschefer Project Highlights

- **Significant gold mineralization intersected within the B14 Zone;**
 - **5.43 g/t Au over 8.00 metres ("m") (4.12 g/t cut to 34 g/t) and 5.49 g/t Au over 5.07 m (3.28 g/t cut to 34 g/t) in BE13-042;**
 - **3.03 g/t Au over 11.10 m in BE13-045, including 4.25 g/t Au over 6.00m.**

"The final assays from our Canadian winter drilling programs provide additional evidence of the potential of both Beschefer and DeSantis to host economic gold deposits," stated John Sullivan, Vice-President of Exploration. *"Beschefer's B14 Zone holes have demonstrated very good widths and the zone has been extended to depth. At DeSantis we have discovered the new 16B Zone a considerable distance into the footwall from previously known mineralization. This zone remains open in all directions, most importantly from its discovery point at 1,050 m vertical to surface. Mr. Sullivan continued, "With these encouraging results in hand our geologists have begun compiling and modelling the geology and mineralization on both projects for follow-up drilling programs in the future."*

Beschefer Project

The Beschefer Project is located in northwestern Quebec, 12 kilometres ("km") east of the past-producing Selbaie mine and 80 km east-southeast of the recently commissioned Detour Gold Mine. The 2013 program consisted of 16 diamond drill holes totaling 6,668 m. The primary focus of this drilling was to follow up on results from the B-14 Zone, an intensely sheared and strongly sericite-, ankerite-, hematite-altered and sulphide-bearing deformation zone, which trends in a northeast-southwest direction across the property.

Holes BE13-042 and BE13-045 were drilled to follow up on BE13-035, which intersected 1.95 g/t Au over 17.85 metres. BE13-042 and BE13-045 returned **5.43 g/t Au (uncut) over 8.00m** (3.28 g/t Au cut to 34 g/t) and **3.03 g/t Au over 11.10 m, including 4.25 g/t Au over 6.00m**, respectively, extending the B14 Zone to depth by 300m. Hole BE13-042 also intersected **5.49 g/t Au (uncut) over 5.07 m** (4.12 g/t Au cut to 34 g/t) in a second well mineralized shear hosted zone in the upper part of the hole.

Post drilling activities will involve a detailed review of the results to prepare for and plan the next phase of drilling.



Excellon Resources Inc.

Suite 900 - 20 Victoria Street . Toronto . Ontario . Canada . M5C 2N8

T: 416.364.1130 F: 416.364.6745 W: ExcellonResources.com

DeSantis Project

The DeSantis Project is located 4.5 km southwest of Timmins, Ontario in the heart of the Timmins gold camp. The fall-2012/winter-2013 diamond drilling program consisted of 18 holes totaling 6,686 m aimed at testing the down-dip extension of the Albitite Zone and untested geophysical and geological targets elsewhere on the property.

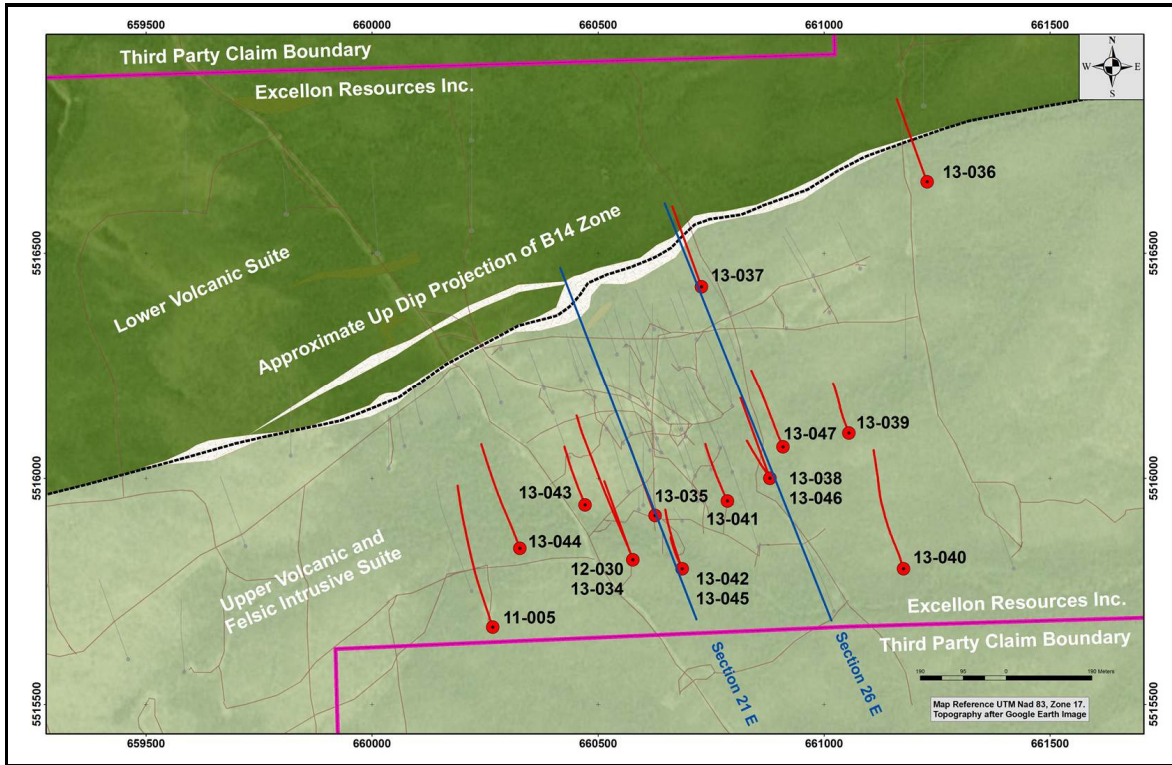
Assay results have now been received for all holes completed during the recent drill campaign. . Previously unreleased results reported today are **3.26 g/t Au over 1.25 m** in DS13-011, which intersected quartz vein bearing pyritic, ankerite and sericite altered mafic volcanics. These veined and altered mafic volcanics are interpreted to be the east strike extension of the vein system that hosts the historic McEnaney Veins.

A focus of any upcoming work will include additional testing of the hydrothermal alteration system hosting the 16B Zone, which was discovered by hole DS11-016B earlier this year. Three holes, DS11-016B, DS11-016D and DS11-016F, have tested this zone to date. The best results **2.16 g/t Au over 31.70 m, including 4.09 g/t Au over 7.20 m** were returned from DS11-016F, while DS11-016B intersected **0.51 g/t Au over 57.60 m, including 1.35 g/t Au over 6.15 m**. These results indicate a significant mineralizing system that warrants further testing. The 16B zone is open in all directions and, most importantly, the up-dip extension of the zone has seen virtually no drilling between DS11-016 and surface.

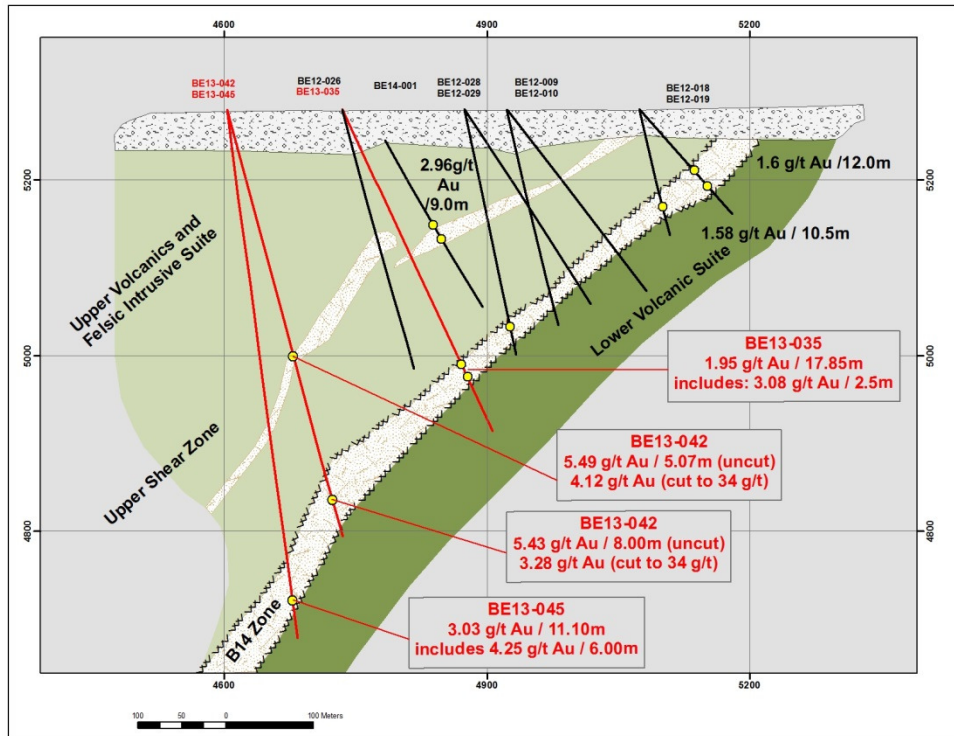
Based on these promising results the Company elected to exercise its option to earn the remaining 49% of the DeSantis property and has issued 540,000 common shares of Excellon to International Prospectors and Explorers Inc. ("IEP"). This was the final obligation under the terms of the 2010 option agreement between Lategra Gold Corp. and IEP. The Company now holds a 100% interest, subject to a Net Smelter Returns ("NSR") royalty ranging from 1.5% to 3.5% by portion of the original DeSantis property. In addition in mid-April the Company issued 48,600 shares and made a payment of C\$20,000 to a group of three Timmins area prospectors and thereby earned a 100% interest, subject to a 2% NSR royalty, in the contiguous DeSantis West property. The Company has the option to buyout portions of each of the NSRs.

A table of assay results for both projects and explanatory maps are found below.

Map 1: Beschefer Property – Plan Map



Map 2: Beschefer Property – Section 21 Holes 035, 042 & 045



Map 3: Beschefer Property – Section 26, Holes 038 & 046

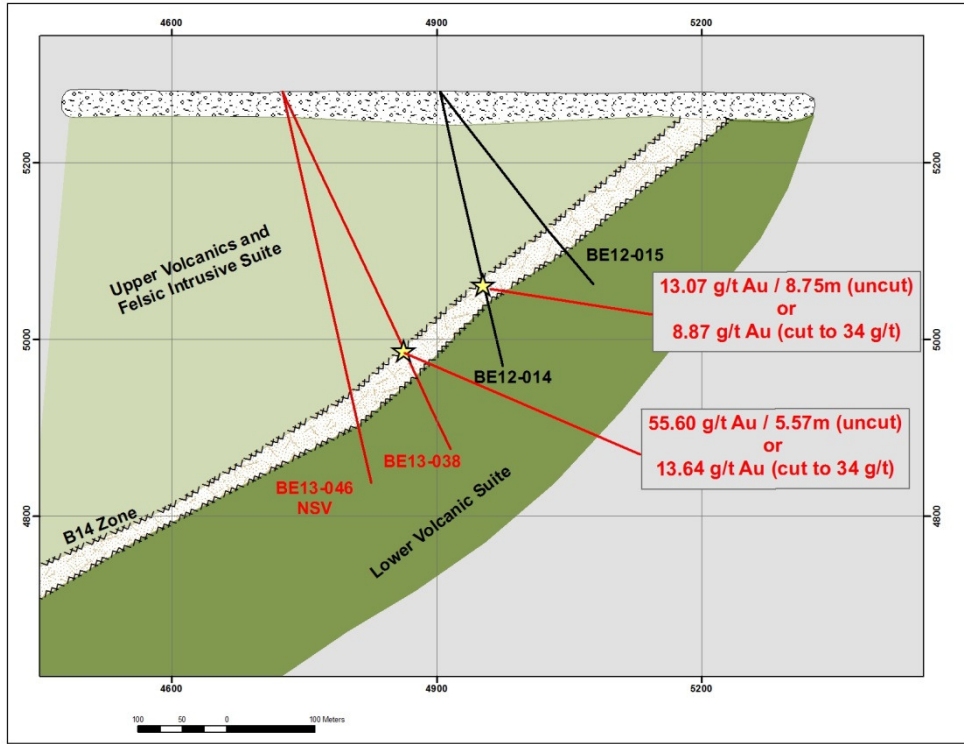


Table: Final Beschefer and DeSantis Assay Results (intervals are core widths)

Location	DDH No.	Interval From (m)	Interval To (m)	Interval width (m) *	Gold (g/t)	Comment Where Appropriate
Beschefer Project	BE13-040	468.24	468.90	0.66	6.08	B14 Zone
	BE13-042	289.38	294.45	5.07	5.49	Upper Mineralization ** 4.12 g/t Au cut to 34 g/t
	includes	294.00	294.45	0.45	34.00	Assay cut, VG @ 294.15m
		454.53	478.12	23.59	2.33	B14 Zone 1.60 g/t Au, cut to 34 g/t
	includes	455.65	463.65	8.00	5.43	3.28 g/t Au, cut to 34 g/t
	includes	459.37	459.67	0.30	34.00	Assay cut, VG @ 459.55m
	BE13-043	93.80	95.30	1.50	1.03	Upper Mineralization
		117.61	118.63	1.02	16.13	Upper Mineralization
	includes	118.17	118.63	0.46	34.20	Upper Mineralization
		123.76	124.43	0.67	2.09	Upper Mineralization
		222.40	222.90	0.50	1.02	Upper Mineralization
	BE13-044	280.44	281.62	1.18	2.55	B14 Zone
	BE13-045	227.20	228.60	1.40	1.08	Upper Mineralization
		517.50	519.00	1.50	2.08	Upper Mineralization
		552.67	553.57	0.90	1.29	Upper Mineralization
		559.20	570.30	11.10	3.03	B14 Zone
	includes	564.30	570.30	6.00	4.25	

Location	DDH No.	Interval From (m)	Interval To (m)	Interval width (m) *	Gold (g/t)	Comment Where Appropriate
	includes	565.05	565.75	0.70	16.70	
		576.00	577.50	1.50	1.98	Below B14 Zone
	BE13-047	295.83	296.52	0.69	1.03	B14 Zone
DeSantis Project	DS13-011	163.75	165.00	1.25	3.26	Deeper McEnaney hole
		298.05	299.20	1.15	1.09	
* True widths are estimated to be 75 - 90 % of core widths for Beschefer and 35 - 55% for DeSantis.						
** At this time it is not known if intervals designated as "Upper Mineralization" are connected in any manner.						

Quality Control

Excellon Resources has a comprehensive quality-control program in place for its Canadian projects to ensure best practice in the sampling and analysis of drill core. This program is managed by, Stephen Conquer one of the project Qualified Persons. Drill core samples are prepared and analyzed by ALS Minerals at either of its Vancouver, B.C. or Val d'Or, QC ISO/IEC 17025:2005 accredited laboratories.

Qualified Persons

The Company's Canadian exploration programs are supervised by John Sullivan, B.Sc., PGeo., Excellon's Vice-President of Exploration and Stephen Conquer, B.Sc., PGeo., Excellon's Exploration Manager, Canada. Both Mr. Sullivan and Mr. Conquer are "Qualified Persons" for the purposes of National Instrument 43-101.

About Excellon

An Evolution in High Grade Silver: *Excellon's 100%-owned La Platosa Mine in Durango is Mexico's highest grade silver mine, with lead and zinc by-products making it one of the lowest cash cost silver mines in the country. The Company is positioning itself to capitalize on undervalued projects by focusing on increasing La Platosa's profitable silver production and near term mineable resources.*

Disclaimer:

The Toronto Stock Exchange has not reviewed and does not accept responsibility for the adequacy or accuracy of the content of this Press Release, which has been prepared by management. This press release contains forward-looking statements within the meaning of Section 27A of the Securities Act and Section 27E of the Exchange Act. Such statements include, without limitation, statements regarding the future results of operations, performance and achievements of the Company, including potential property acquisitions, the timing, content, cost and results of proposed work programs, the discovery and delineation of mineral deposits/resources/reserves, geological interpretations, proposed production rates, potential mineral recovery processes and rates, business and financing plans, business trends and future operating revenues. Although the Company believes that such statements are reasonable, it can give no assurance that such expectations will prove to be correct. Forward-looking statements are typically identified by words such as: believe, expect, anticipate, intend, estimate, postulate and similar expressions, or are those, which, by their nature, refer to future events. The Company cautions investors that any forward-looking statements by the Company are not guarantees of future results or performance, and that actual results may differ materially from those in forward looking statements as a result of various factors, including, but not limited to, variations in the nature, quality and quantity of any mineral deposits that may be located, significant downward variations in the market price of any minerals produced [particularly silver], the Company's inability to obtain any necessary permits, consents or authorizations required for its activities, to produce minerals from its properties successfully or profitably, to continue its projected growth, to raise the necessary capital or to be fully able to implement its business strategies. All of the Company's public disclosure filings may be accessed via www.sedar.com and readers are urged to review these materials, including the technical reports filed with respect to the Company's mineral properties, and particularly the November 22, 2011 NI 43-101-compliant technical report prepared by Roscoe Postle Associates Inc. with respect to the Platosa Property. This press release is not, and is not to be construed in any way as, an offer to buy or sell securities in the United States.

FOR FURTHER INFORMATION, PLEASE CONTACT:

Excellon Resources Inc.
 Brendan Cahill, President & CEO or
 John Sullivan, Vice President Exploration
 T. (416) 364-1130 E. info@excellonresources.com

